

The Complete Tahoe Experience



609 Doeskin Court
INCLINE VILLAGE • LAKE TAHOE • NV



This unique home, situated at the end of a small cul-de-sac next to beautiful Forest Service owned land was expanded over the years and is divided into three levels which maximize the breathtaking lake and mountain views.

From the moment you enter through the custom designed and finished front door you are greeted by spectacular views all the way to Heavenly Valley and the Southshore of Lake Tahoe.

This is not just a gracious home; it is a way of life.

Offered for
\$5,975,000.

Three Levels each with Living/Gathering Areas
7 Bedrooms, 5 Baths, Powder Room, 2 Car Garage, View Decks
APN 125-481-07
Lot 7, Block F, Incline Village Unit No. 4



For More Information about this home, Matterport 3D Tour,
Drone Video, Photo Gallery, Maps and Floorplans visit

www.TahoeLakeviewRetreat.com



Ina Haupt

Broker 775.742.9255

Office: 775.833.0444

Email: ina.haupt@premiertahoe.com

NV B.0047350.INDV / B.0005585.CORP

Premier Properties of Lake Tahoe, Inc.

Offices in Incline Village and Reno, NV

PO Box 3815, Incline Village, NV 89450

www.premiertahoe.com

Offering Subject to Errors, Omissions, Change of Price or Withdrawal Without Notice. If square footage is a consideration for buyer, buyer to verify. Seller is a lic. Washington State and Arizona Realtor



Property Highlights

609 DOESKIN COURT • INCLINE VILLAGE • LAKE TAHOE • NV

General Features

- Located at the Southeast end of the Doeskin Court cul-de-sac, bounded to the east and southeast by Forest Service Land. Downslope lot. Main entry is off Doeskin Court.
- This home has been featured in Mountain Living Magazine and various design and architectural websites and social media posts, and reflects the professional, award-winning designer influences. Even with all the media attention, the home is warm, inviting, and comfortable and with all the rooms, endlessly flexible. It is ideally suited for families large or small, for hosting extended family, friends, and business partners or for work at home. It will serve as a home base for all the Tahoe basin has to offer. All private Incline property owner amenities are included. There is favorable Nevada taxation, and fire ratings for insurance.
- The home is on three levels, the original top two floors were extensively remodeled in 2012, and the north half of the second level, and bottom level were new construction in 2008. The driveway 'bridge' was fully reconstructed in 2013.
- There is a 2-car Garage, with coated floor, built-in cabinets on west wall, attic storage, and new (2020) steel/wood faced glass transom garage doors. The garage has a side entry door, deck entry door, and interior door leading to the Mudroom/Laundry and Kitchen. There are two full sized windows.
- The community mailbox is near the corner of Doeskin/Tyner, a short walk away.
- The three-level home has seven bedrooms, five full baths and a powder room, with three Gathering rooms on each level, and a small bonus room. The main living level top floor includes the Owner's Bedroom and Bath suite and powder room. The second floor, middle level down, includes four bedrooms, two bathrooms and bonus room; the bottom, or lowest level, includes two bedrooms and two bathrooms.
- The main level features open vaulted stained wood ceilings with exposed beams and trusses, and recessed and custom directional lighting, accent chandeliers and pendants.
- Floors through-out are walnut, or carpet. The wood floors are rated to work in conjunction with the radiant heat flooring.
- The home is heated with radiant heat flooring, or wall mounted radiant heaters, some that can be controlled remotely through 'smart' Honeywell thermostats and phone apps. The energy star Lochinvar Boiler is located on the bottom level and is clearly marked for thirteen independently controlled zones. It also has a closed loop recirculating pump.
- There is a fire sprinkler system, the fire riser is located on the bottom level.
- There is a SimpliSafe alarm system that includes door and window monitors, motion and glass break monitors, and cameras. The system includes the house and garage. There is also a RING doorbell. All can be remotely monitored or viewed via app.
- There are two large oversize Rinnai R75 LS instant hot water heaters that provide 'endless' on demand hot water.

- There is a double sized 'bear box' garbage bin at the driveway.
- The home entrances are via side garage keyless lock door, Main front door on the main level. A door accessed via stairs next to the driveway to the second level north wing. And, through a bottom level door accessing the lowest floor.
- The house has several decks including the Front door entry deck walkway, the main level deck including a large lake view deck off the kitchen (rebuilt in 2021 with Trex all-weather decking), lake facing main level jacuzzi deck, and wrap around deck with entry off the Owner's suite. The middle level deck includes a smaller lake facing entertaining deck and wrap around deck. The bottom level includes a small landing at the entry door. There is also enclosed crawl space storage with access on the east and south sides of the house. There are fans located in the crawl spaces for improved airflow of trapped air to eliminate any radon gas intrusion into the home.
- New (2021) Trex entry way decking and stairs to front door landing. Trex decking has a 15+ yr. non stain useful life, perfect for high alpine environments.
- The main level, deck, and gathering area of the middle level feature ceiling speakers for central music.
- There are hose bibs at various locations, and the hose bib on the main level deck near the kitchen window is plumbed for hot water to facilitate filling the jacuzzi, and cleaning. There is also a natural gas line leading to the northeast corner of the deck for future natural gas grill.

Front Entry / Exterior

- The home is clad in chocolate-stained cedar, with a distinctive roof line in shingle and composite roof. Roof angles are away from walkways and driveway entry to reduce snow fall during winter in circulation areas.
- A unique feature of the home is the custom designed and custom-built front entry door. Inspired by the ancient technique of Shou Sugi Ban used for waterproofing and preserving wood. It involves charring and oiling wood to create a beautiful, grained texture that is accented by the Rocky Mountain Hardware door lock and latch, and frosted glass inserts.

Entry / Interior

- The elevated entry level overlooks the main living area and a spectacular lake view filtered through pines clear to the south end of Lake Tahoe. The floor is local slate with a bench seating area, and powder room. The hanging ceiling light is custom made glass and metal fixture. Steps lead to the main level, and central stair.
- The Powder room features a semi-custom metal framed mirror designed by renowned artist Jan Barboglio, a Stone Forest basin with copper water spout/handles on a custom made local fallen old growth Juniper wood pedestal.

Property Highlights

609 DOESKIN COURT • INCLINE VILLAGE • LAKE TAHOE • NV

Main Level

The completely remodeled main level includes the Gathering Room, a second Seating area, the Dining Room that seats ten, the gourmet kitchen with walk-in pantry, Mudroom, Laundry, and Owner's/Primary suite.

The Mudroom includes two walls of DWR walnut top shelf, ample hanging, seating, and shoe storage. There is also open shelving for key and mail drop and phone charging.

The Laundry room includes space for oversized washer/dryer, cabinet storage, and large utility sink. (electrical box)

The Kitchen is a cook's and entertainer's dream and includes high end appliances and finishes. Features include;

- Viking Professional eight gas top burners, and large and small electric oven Range with a large capacity stainless steel Broan Elite hood with down lights.
- Cabinet mounted Sharp Microwave R12 14T 1100 watts.
- Bosch Silent Plus Dishwasher with adjustable racks.
- Large 32" two compartment stainless steel sink and disposal and features a fully adjustable Kohler 'Origami' faucet.
- One of the most unique and most talked about features of the kitchen is the 30" trough style Kohler Undertone stainless steel recessed faucet sink which is great for food prep, as an ice bin, or cleaning, leaving the countertop clear of clutter. It also features a garbage disposal.
- Built-in 36" stainless steel Thermador double door refrigerator, and lower pull-out freezer with internal ice maker.
- Built-In 24" stainless steel glass front display wine storage chiller with display rack, internal lighting, roll out shelves and capacity for 75+ bottles.
- Cabinetry is custom made with a combination of walnut front, glass fronts, and open shelf uppers with undercabinet lighting and power strips. The lowers include roll out shelves for pots and pans, and utility drawers.
- The walk-in pantry includes over 52' linear feet of storage. (attic access)
- The counter tops are a combination of large slab polished or honed Crema Marfil marble, and the counter to ceiling backsplash is custom hand painted tile. The counter also offers bar seating and opens to the main dining area, with a view of the lake.

The main dining area can seat 10-12 and is positioned to look out to the deck and pine view, or lake view. It is accented with a DWR modern white 'antler' chandelier. There are also wall mounted electrical plugs to make tabletop computer work a breeze.

The main Gathering Room commands two seating areas to command the best view through a large, vaulted window wall with amazing lake views. Windows provided warm sunlight in winter and filtered indirect light in summer and select windows include remote controlled blinds, and/or custom window coverings.

The large gas fireplace fires up at the touch of a button, and features a semi-custom sandstone surround, and 'leathered' local granite hearth. Many of the windows throughout the main level are operable to allow for great cross ventilation. The open beam trusses also house custom recessed up/down lights for dramatic task and ceiling lighting.

The primary suite bedroom features walnut heated floors, wood clad vaulted ceilings, RH chandelier, King size bed, window seat with custom cushions, operable windows for great cross ventilation, custom blinds and drapes, private deck access.

The primary suite bathroom includes a fully glass enclosed Carrera marble shower, RH Carrera marble vanity, and walk-in closet. (attic access)

2nd Level - Middle Floor

Stairs open onto the second floor gathering/media room that has access to a second entertaining deck and features forest and lake views. Ceiling mounted speakers connect to central house music system, and it is also wired for surround sound or configured for wireless surround sound. The central internet hub is located here, along with the central security hub nearby. Wireless internet hubs connect all floors.

There are two bedrooms and a fully remodeled bath off the second level landing. The bath includes a glass enclosed crema marfil shower, and crema marfil topped RH vanity.

From this level a hall entry leads to the rear north wing with two additional bedrooms, bath, and bonus room that has direct access to the outdoor landing that leads up exterior stairs to the main driveway. There is ample storage at the outdoor landing for kayaks and bikes. The entry hall includes wall closet(s) for storage, and built-in stacked washer and dryer. (two electrical boxes)

The north rear bathroom features a large, tiled shower, and double sink vanity. The little bonus room is connected to one of the north bedrooms and has direct access to outside and can be repurposed as a second mudroom, home office, work out room, or small sleeping room.

3rd Level - Bottom Floor

Stairs lead down and open onto a landing and the lower level Gathering/Game room. The Gathering room also has an exterior door that leads the natural mountain landscape. During the winter, the hillside leading down the east side of the home makes for an excellent sled run, and during the summer a great space to set up hammocks or Adirondack chairs. The property corners are marked, and the property line extends farther than you think to the southeast corner.

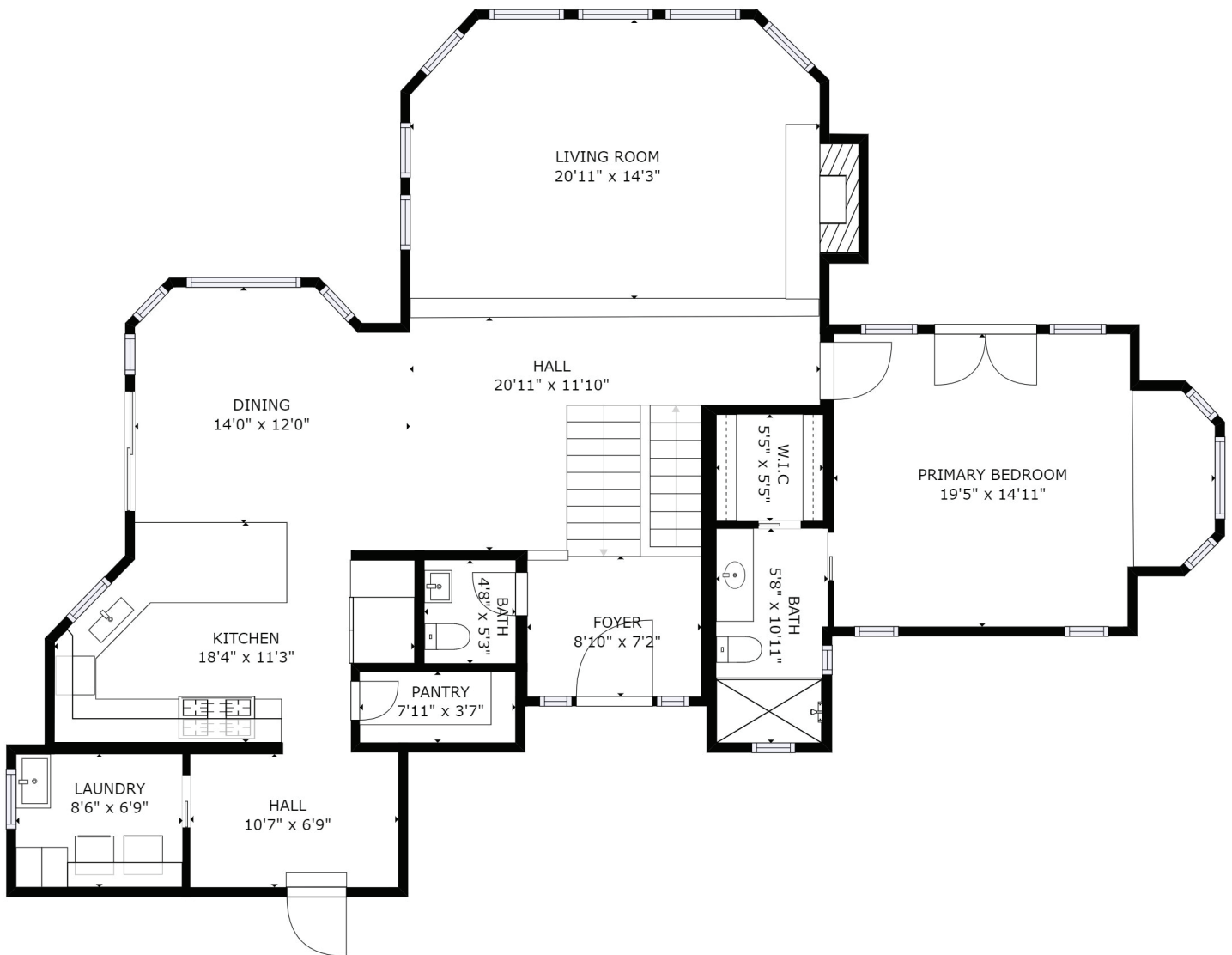
There is a bathroom with tub off the landing, and two bedrooms. (also, boiler closet, and in the west bedroom closet the fire riser and hot water system)

One of the two bedrooms features an en suite bath with shower. (The closet also has crawl space access).

Floorplan

609 DOESKIN COURT • INCLINE VILLAGE • LAKE TAHOE • NV

Main Level



Sizes and dimensions are approximate. Supplied by Matterport

Floorplan

609 DOESKIN COURT • INCLINE VILLAGE • LAKE TAHOE • NV

2nd Level - Middle Floor

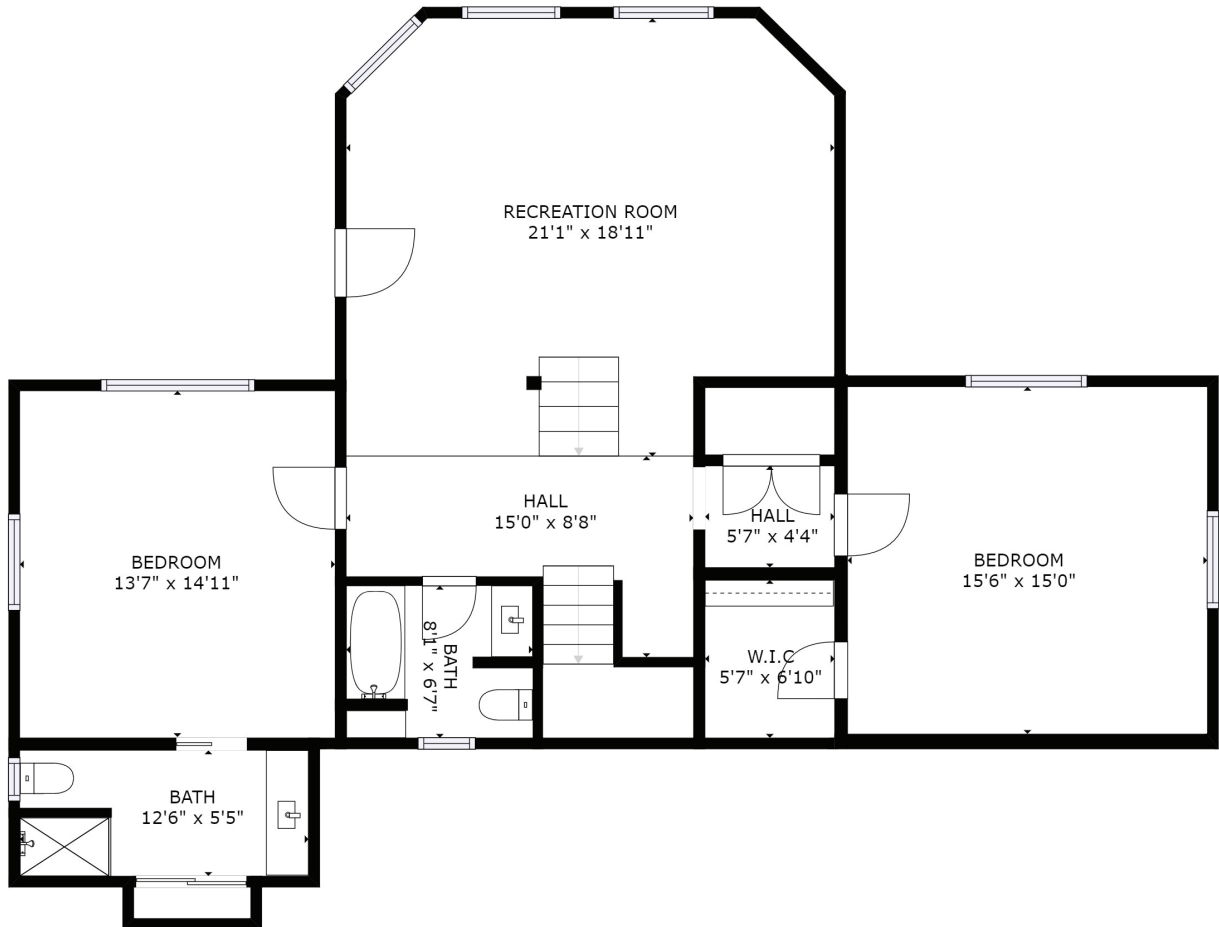


Sizes and dimensions are approximate. Supplied by Matterport

Floorplan

609 DOESKIN COURT • INCLINE VILLAGE • LAKE TAHOE • NV

3rd Level - Bottom Floor



Sizes and dimensions are approximate. Supplied by Matterport